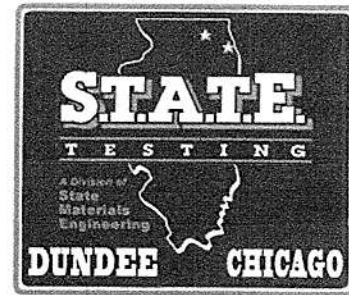


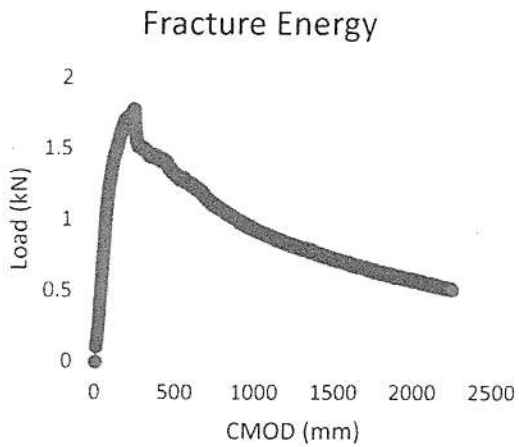
# DCT Summary Report



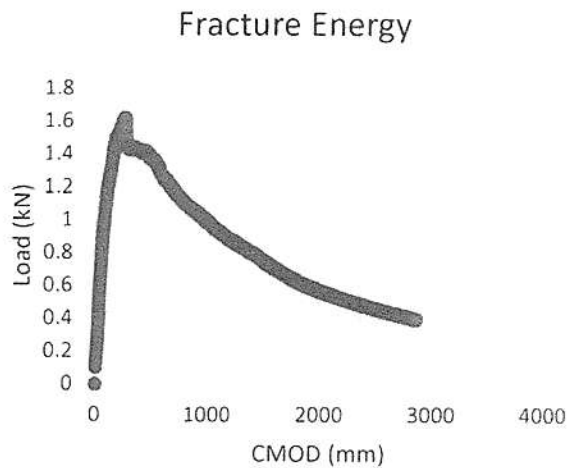
Sample ID:	J-Band Pavement Specimens
Sample 1 Comment:	Core 1
Sample 2 Comment:	Core 2

	Energy	
Sample 1	675.000	J/m <sup>2</sup>
Sample 2	737.000	J/m <sup>2</sup>
Average	706.000	J/m <sup>2</sup>
STD	43.841	J/m <sup>2</sup>

Sample 1



Sample 2



**Comments:**

Specimens were taken from existing pavement in Broadview (16th Street) and sawcut at lift prior to testing

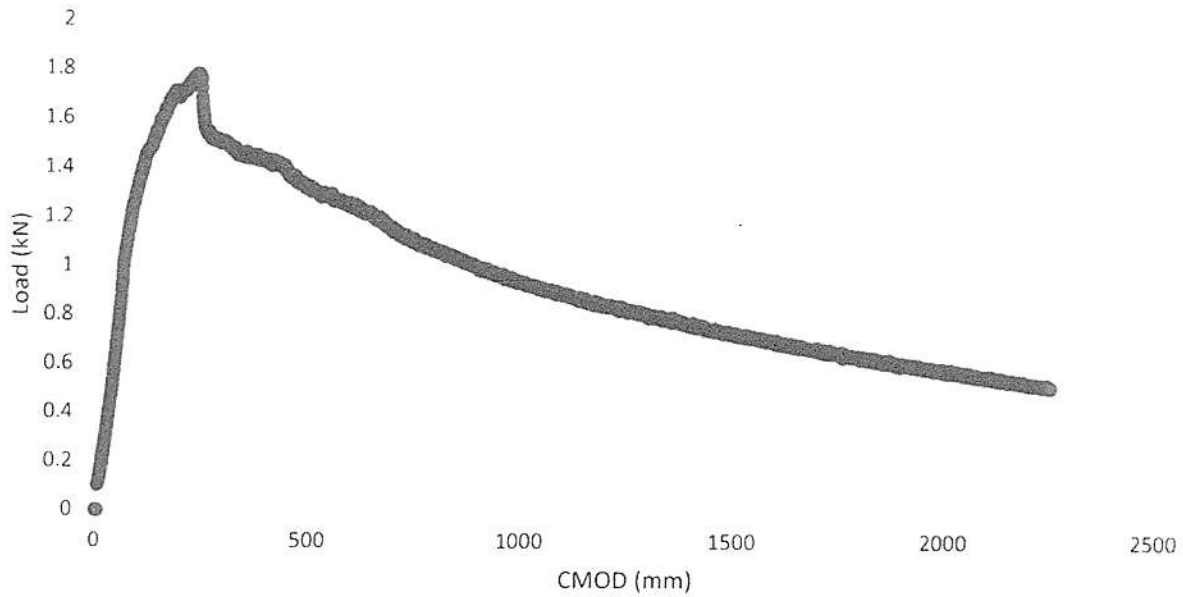
# DCT Test Results

Tests performed in accordance with  
IDOT Modified ASTM D7313-07



Test Date:	5/12/2016 10:33:02 AM	
Technician:	Greed	
Specimen ID:	J-Band Pavement Specimens	
Comments:	Core 1	
Diameter:	150.00	mm
Thickness:	39.00	mm
Ligament:	80.50	mm
Cumulative Area:	2119.51	Nmm
Max Load:	1.779 kN at 9.32 seconds	
Slope:	0.0170	mm/second
Test Temperature:	-12	°C
Energy:	675.000	J/m <sup>2</sup>

Fracture Energy



Comments:

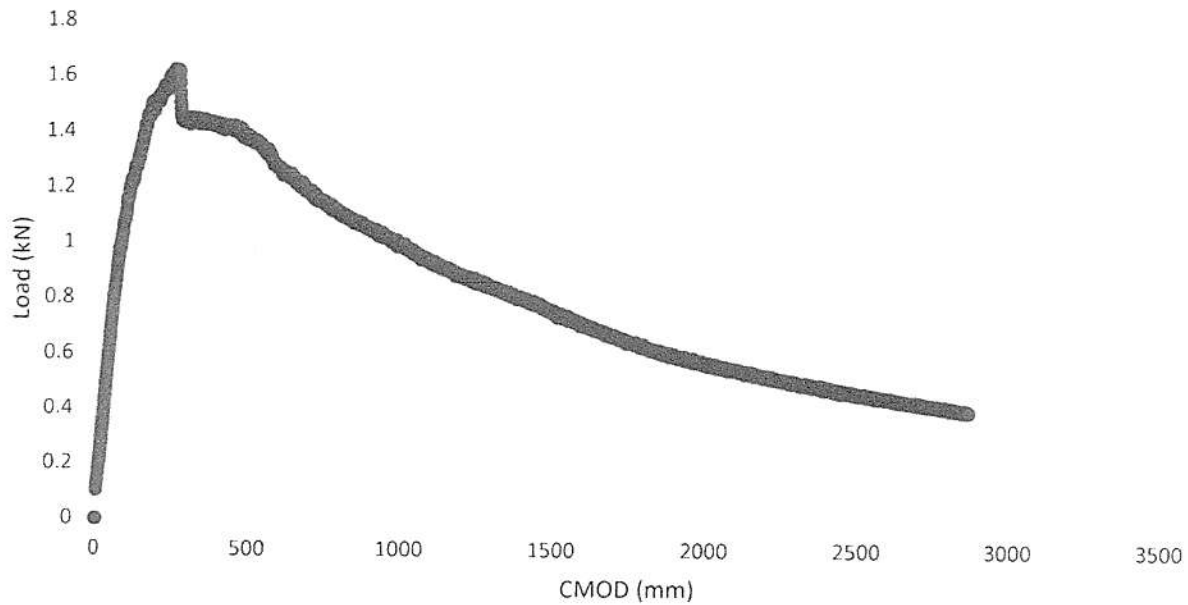
# DCT Test Results

Tests performed in accordance with  
IDOT Modified ASTM D7313-07



Test Date:	5/12/2016 10:43:15 AM	
Technician:	Greed	
Specimen ID:	J-Band Pavement Specimens	
Comments:	Core 2	
Diameter:	150.00	mm
Thickness:	39.00	mm
Ligament:	79.00	mm
Cumulative Area:	2270.12	Nmm
Max Load:	1.624 kN at 9.80 seconds	
Slope:	0.0170	mm/second
Test Temperature:	-12 °C	
Energy:	737.000	J/m <sup>2</sup>

Fracture Energy



Comments:

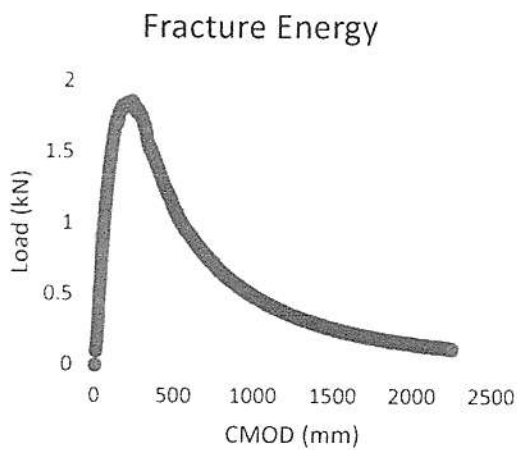
# DCT Summary Report



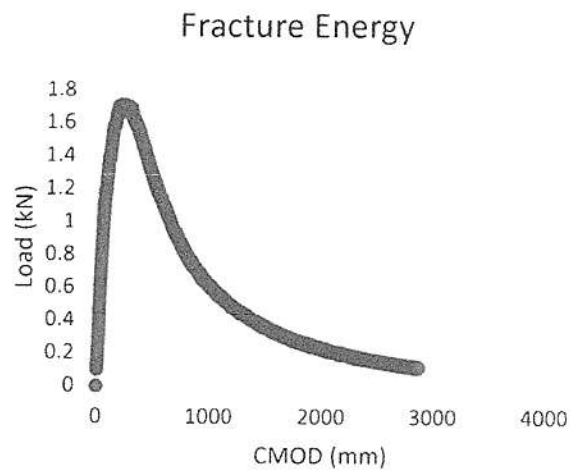
Sample ID:	Non-J Band Pavement Specimens
Sample 1 Comment:	Core 5
Sample 2 Comment:	Core 6

	Energy	
Sample 1	312.000	J/m <sup>2</sup>
Sample 2	356.000	J/m <sup>2</sup>
Average	334.000	J/m <sup>2</sup>
STD	31.113	J/m <sup>2</sup>

Sample 1



Sample 2



**Comments:**

Specimens were taken from existing pavement in Broadview ( 14th Street) and sawcut at lift prior to testing

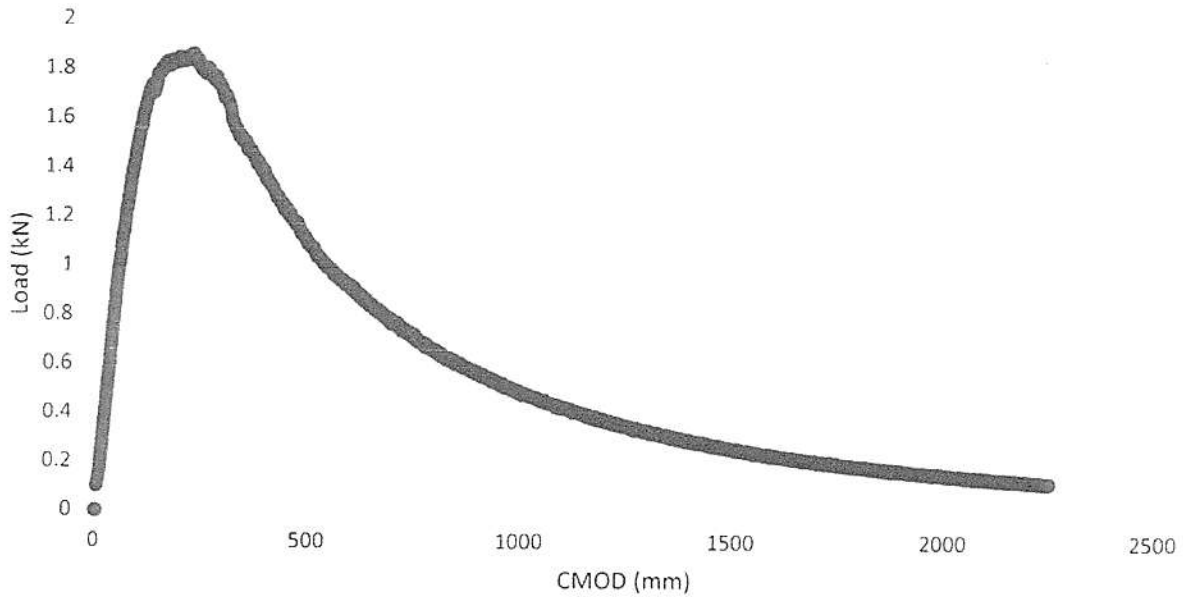
# DCT Test Results

Tests performed in accordance with  
IDOT Modified ASTM D7313-07



Test Date:	5/12/2016 10:51:52 AM	
Technician:	Greed	
Specimen ID:	Non-J Band Pavement Specimens	
Comments:	Core 5	
Diameter:	150.00	mm
Thickness:	38.50	mm
Ligament:	80.00	mm
Cumulative Area:	960.82	Nmm
Max Load:	1.860 kN at 8.76 seconds	
Slope:	0.0170	mm/second
Test Temperature:	-12 °C	
Energy:	312.000	J/m <sup>2</sup>

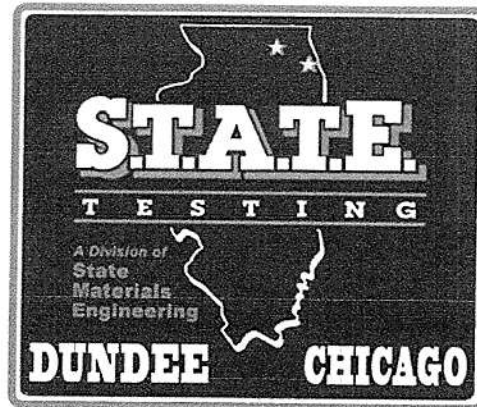
Fracture Energy



Comments:

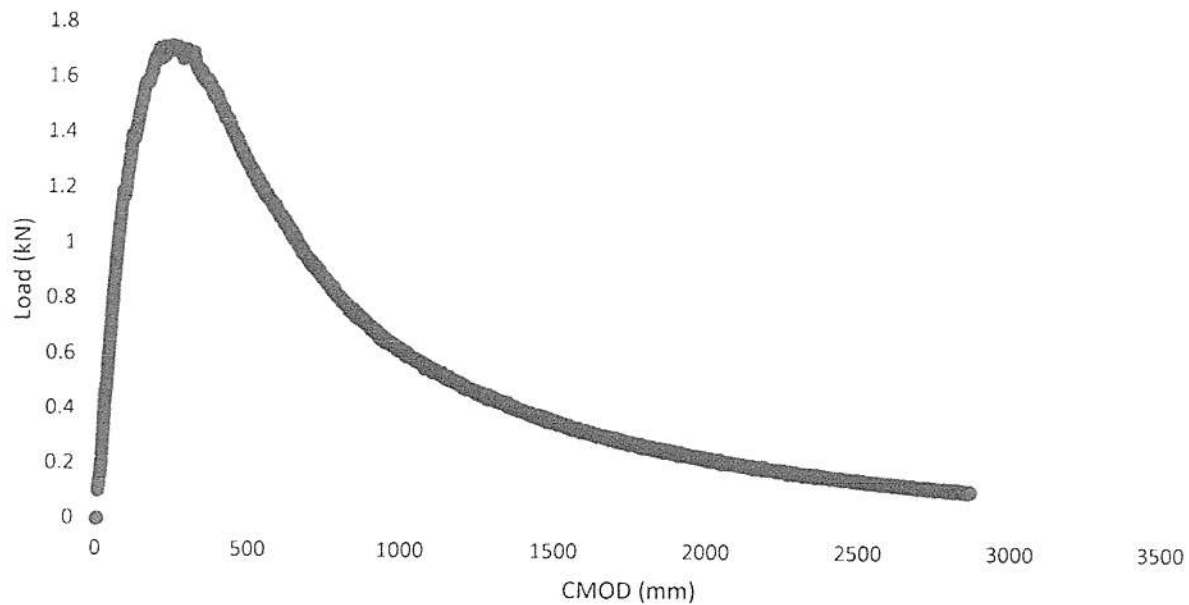
# DCT Test Results

Tests performed in accordance with  
IDOT Modified ASTM D7313-07



Test Date:	5/12/2016 11:01:22 AM	
Technician:	Greed	
Specimen ID:	Non-J Band Pavement Specimens	
Comments:	Core 6	
Diameter:	150.00	mm
Thickness:	40.50	mm
Ligament:	79.50	mm
Cumulative Area:	1146.29	Nmm
Max Load:	1.714 kN at 9.08 seconds	
Slope:	0.0170	mm/second
Test Temperature:	-12	°C
Energy:	356.000	J/m <sup>2</sup>

Fracture Energy



Comments: