



J-BAND®

CHAMPAIGN COUNTY, IL

Project Profile

Project Name:
Mattis Ave, Illinois DOT # 91489

Location:
Mattis Ave

Installed By:
Road Fabrics, Inc.

Paving Contractor:
Cross Construction

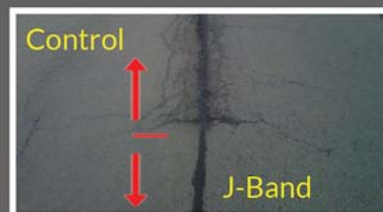
Area Installed:
49,252 LFT

Installation Date:
September 2015

J-Band® is a longitudinal joint sealer used to reduce the cracks and increase the density in the paving joint. The longitudinal joint crack forms because the first paving pass creates an unconfined edge. Rollers can't compact the edge to the same density as the interior of the mat. Then air and water intrudes into the HMA at the construction joint and damages the pavement over time. This causes premature construction joint failure and triggers maintenance or reconstruction.

IDOT District 5 engineer Steve Robinson decided to use J-Band® after reviewing a 12 year old pavement with J-Band® in it. There was a noticeable difference between the control section and section with J-Band®.

J-Band® is placed in the form of a heavy membrane under the intended area for an overlay construction joint, 18" wide and with thickness up to 5/32". J-Band® then migrates into the high air voids in the HMA overlay in the area of the longitudinal construction joint and reduces voids to more typical HMA range.



Contact Us

PO Box 87380, Carol Stream, IL 60188

Phone: 800-325-5747

Email: sales@roadfabrics.com

Call Us Now: 800-325-5747